

The Sea Breeze



PUBLISHED BY HILLSMERE SHORES IMPROVEMENT ASSOCIATION

September 2020

GET INVOLVED!
BOARD MEMBERS NEEDED!



HSIA is seeking candidates to fill the positions of President, Vice President, Secretary and Treasurer for a two year term (2021 - 2022). These leadership positions play an important part in setting the tone and trajectory of our community. Details on page 4.



New pump out installation @ Marina was a combined effort of Leight Electric, Gene's Plumbing, Norm Johansen and Steve Vanderbosch.

Inside...

2	President's Message	10	HSIA Building Permits
3	Meeting Minutes	11	Native Plant Sale Flyer
4	HSIA News & Events	15	Garden Club
7	Security Report	16	Piers & Harbors

President's Message

~ Michael J. Waters, HSIA President



Welcome to the September *Sea Breeze*!

This is the month when the Hillsmere Shores Improvement Association begins our annual planning process. As you will note inside, nominations are being sought for our November election of officers, while the Budget Committee is busy getting input for FY2022 that starts in July 2021.

These activities and many others are handled by a wonderful set of volunteers. They contribute to the planning, operation, and maintenance of our properties (beach, marina, pool, and house). They organize activities; which were more numerous before COVID-19. They look out for their neighbors, and generally define us as a community.

It has been an absolute pleasure working with them as a board member and then as president but starting in January I need to reduce my commitment. After much consideration, I have decided not to seek reelection. I am conflicted by this decision. On one hand, the job continues to evolve in rewarding ways, as I meet more people and realize new opportunities for our Association. On the other hand, old age is catching up with me and old age has the upper hand. I plan to stay active by working on Committees and finding other ways to contribute.

Officer positions are for a two-year term, with meetings on the last Thursday of the month 7:00 -9:00pm. Potential candidates will find details in this issue. Please consider supporting our Association and finding your own way to contribute.

Warmest Regards,
Mike Waters



Effective August 20, 2020, 911 call centers in Anne Arundel County will begin accepting text messages via text-to-911 service.

Customers of the four major wireless carriers (AT&T, Sprint, T-Mobile, and Verizon) who are enrolled in their carriers' text messaging and/or data plan can send text messages to 911 in an emergency when they are unable to place a phone call. This includes those who are deaf, hard-of-hearing, or speech impaired, those who may find themselves in a situation where placing a voice call could put them in danger, or those who are experiencing a medical emergency and are unable to speak.

If you are in need of emergency services and unable to place a phone call, you can enter 911 in the "To" line of a new text message and begin your message with the location of the emergency and the type of help needed—police, fire, or emergency medi-

(Continued on page 8)

Motions from July 2020 Zoom Board meeting:

(complete minutes can be found on the Hillsmere website at www.hillsmreshereshores.org)

PRESIDENT'S REPORT: Phil Jones moved the Board approve the nomination of Sharon Blugis as Beach Chair. Mike Wurst seconded the motion. Vote taken – unanimously approved.

PERMITS: Chris Grim moved the Board approve the variance request for Paul Barnes at 625 De-myran Drive. Mike Wurst seconded the motion. Discussion. Vote taken – 6 in favor (Gene Gross, Steve Vanderbosch, Phil Jones, Mike Wurst, Chris Grim, Jay Harper); 2 opposed (Ray Sullivan, Dave Miles); 1 abstained (Claire Corcoran); motion passed.

HILLSMERE HOUSE: Gene Gross moved the Board accept the contract proposal with Browns Well and Pump Service to replace the water well system at 119 Great Lake Drive in the amount of \$3,310. Steve Vanderbosch seconded the motion. Discussion. Vote taken – unanimously approved.

PIERS & HARBOR:

- Steve Vanderbosch moved the Board approve award of a Reserve Study Contract to Superior Reserve in the amount of \$3,750. Mike Wurst seconded the motion. Discussion. Vote taken – unanimously approved.
- Steve Vanderbosch moved the Board approve a contract with Leight Electric in the amount of \$27,200 for the replacement of 32 shore power outlets at the Marina with code-compliant Eaton Newport Harbor Mate pedestals. Dave Miles seconded the motion. Discussion. Vote taken – unanimously approved.





NUALA O'LEARY
REALTOR®
I am happy to help!

Eastport-Annapolis Sales
320 Sixth Street
Annapolis, MD 21403
Office: 410.260.2800
Cell: 410.404.0568
Nuala@LongandFoster.com

PREMIER LISTING OF
CHRISTIE'S
INTERNATIONAL REAL ESTATE


LEADING
REAL ESTATE
COMPANIES
IN THE WORLD

LONG & FOSTER
REAL ESTATE, INC.

REALTOR®

Click to sign up

Email and Text Alerts



Sign up to receive
Community Health, COVID-
19 and/or Recreational
Water Quality Alerts!

Important numbers and emails

AACO Police emergency 911
AACO Police non-emergency 410-222- 8610
Hillsmere Security: security@hillsmreshereshores.org
HSIA President: president@hillsmreshereshores.org
Key School liaison: llatimer@keyschool.org
AACO traffic engineer: pwflor11@aacounty.org

HSIA Community News and Events

~ Jean Somers, HSIA Administrator

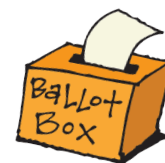


Recreational Events Canceled Through September – Our annual Pig Roast and Fall yard sale are cancelled due to COVID-19. We have two social events left for the Fall – the Halloween Parade in October and the Oyster Roast in November. We'll keep you posted on these events.

New Beach Chair – Sharon Bugis has stepped up to help us with our wonderful beach, volunteering to be our new Beach Committee Chair! Sharon has hit the ground running, hosting a Zoom Beach Committee meeting in August, and scheduling a joint Beach Committee/ Environmental and Shoreline Committee meeting on Tuesday, September 8, 6 pm at the small pavilion in front of the beach wall. All are invited to attend the September meeting.


Call For Candidates (HSIA Officers) – We are seeking candidates to fill the positions of President, Vice President, Secretary and Treasurer for a two year term (2021 - 2022). These leadership positions play an important part in setting the tone and trajectory of our community. In order to run for an Officer position, residents must be current members of HSIA. If you are interested, please email the following information to admin@hillsmereshores.org no later than September 12:

1. Statement of intent to run, to include a statement that you are a current member of HSIA
2. Statement of qualifications (bio)
3. Goals and/or vision for the community




Candidates will be announced on our website and in the October Sea Breeze. Ballots will also be available online and in the newsletter. Please consider running for

(Continued on page 5)



**KLAKRING MOTOR
COMPANY**

David S. Klaking
Vice—President




1970 West Street
Annapolis, MD. 21401

Phone: 410-266-6404
Fax: 410-266-7614
Email: sklaking@aol.com
www.klakingmotors.com

College Prep is

KEY



"Key helped me recognize the value of critical thinking skills and also helped me have confidence in a challenging academic setting. I know that I am prepared for college courses, especially in the writing department."

**Angela Harris, Key '20
Vanderbilt University '24**

VISIT KEY

Key's Admission Counselors are providing virtual tours to interested families. While no substitute for a walking tour of our campus and Fusco Athletic Park, the virtual tours are designed to be a personalized experience.

To contact us with questions or to arrange for a tour, go to keyschool.org/Visit.



The Key School engages children from 2.5 years of age through grade 12 in a progressive, coeducational, college-preparatory program on its picturesque 15-acre campus located 4 miles from downtown Annapolis.

534 HILLSMERE DR. • ANNAPOLIS, MD • 21403 • 410.263.9231 • KEYSCHOOL.ORG

(Continued from page 4)

an HSIA Officer position. Your community thanks you!

Run for the Lighthouse – The annual Annapolis Run for the Lighthouse was scheduled for Sunday, September 13. This Run, which supports the Lighthouse Shelter, normally starts at Quiet Waters Park and has a half-marathon run through the streets of Hillsmere. Due to COVID, this year's Run will be a virtual event. If anyone would like more information on the Virtual Race, please visit AnnapolisRunfortheLighthouse.org.

Dumpster Days – Mark your calendar for our annual Dumpster Days scheduled for Friday and Saturday, October 23 and 24. More information will be in the October Sea Breeze.

Beach Reservations – We are continuing to take reservations for residents' personal events at our pavilion. However, due to COVID-19, the limit of guests is 30 people. Social distancing rules apply and the use of face masks is required when social distancing guidelines can't be met. **HSIA is not cleaning and sanitizing the tables or playground equipment.** To reserve the large pavilion, please contact the Administrator at 410-263-4456 or send an email with the date and time requested to admin@hillsmereshores.org. A refundable \$200 security deposit is required. You will need to provide the time and duration of your event. You can reserve the pavilion for the entire day or for as little as two hours. This allows more residents use of the space for parties. Please note that reservations are not final until you receive a confirmation from the HSIA Administrator. **Alcohol cannot be served at your event because the Anne Arundel County Liquor Board is not issuing one-day liquor licenses.**



Now Scheduling Fall Plumbing Inspections! Call (410) 757-2992



\$99

Fall Plumbing
Inspection

With this coupon. Limit 1/customer. Anne Arundel & Queen Anne's County only. Cannot be combined. Expires 11/30/20.

FREE

Plumbing Estimate

With this coupon. Limit 1/household. Anne Arundel & Queen Anne's County only. Expires 11/30/20.

HagueWaterofMD.com



**Buy
Sell
Invest
Maximum Profit
Made Easy**



**Judy Miller
Realtor
202-841-3557**

Annapolis

Keller Williams Select Realtors - Annapolis

- 84% of all listings are **SOLD** Ind avg. is 63%
- Over 600 listings - **SOLD**
- 98.4% of Sold Price compared to List Price
- Team Average days on market is 29
- Over 100 Years **Real Estate Experience**
- **TOP 1%** of Annapolis Area Producing Agents

**Highest Net Proceeds to our Sellers,
in the Least Amount of Time ,
with the Least Amount of Hassle!**



**KITCHENS
ADDITIONS
SIDING
PAINTING**

**REMODELING
QUALITY SERVICE**

**BATHROOMS
WINDOWS AND DOORS
FLOOR COVERING
ROOF REPLACEMENT**

**GREGORY J. MAGGIO
HILLSMERE RESIDENT**

**410-263-0716
M.H.I.C. 26605**

**BAY RIDGE
LAWN & LANDSCAPE**

**244 Old Mill Bottom Road, South
Annapolis, Maryland 21409**

PAUL COLLINS, PRESIDENT 410.757.1381
www.BayRidgeLawnAndLandscape.com FAX 410.757.0055

Security Report

~ Claire Corcoran, HSIA Board member and Security Committee Chair



During the summer months we have increased daytime security coverage to 7 days a week, either at the beach and/or driving neighborhood patrol; we've also added a security checkpoint at the marina on the weekends. Please remember to get your 2020 HSIA stickers, if you do not yet have them for your vehicles. This year, for your convenience, anytime you see the patrol car at the beach, you can request a sticker so long as you have the car registration showing a Hillsmere address. Please remember you will need to renew again next spring for 2021. The stickers are FREE and color coded every year (2020 is purple) for residents. A resident is defined as a homeowner or a renter with a leasehold of 6 months or longer. As a reminder, the beach gate closes at sunset, which becomes earlier and earlier throughout September.



*Working through the maze of technology,
accounting, and the tax code.*

MARIE GILBERT
Certified Public Accountant

(410) 263-8474 office
(410) 263-4452 fax
mariegilbertcpa@msn.com

Hillsmere Resident
Annapolis, Maryland 21403



Connie Golihew

Masters Club
REALTOR®, DSAC, CLHMS
Coldwell Banker Owned & Operated by NRT LLC



c. 443.871.6021
o. 410.224.2200



Connie@MarylandLuxuryHomes.org



Foxwell

FLOOR COVERING

Local Annapolitan
Over 60 Years
On Staff Designers, Sales,
Installers, & Repair Techs
(no third party people
in your home)

Carpet ■ Hardwood ■ Tile ■ Vinyl
Laminate ■ Sanding & Refinishing
& Custom Window Treatments

MHIC# 50685

Family Owned & Operated • Lifetime Warranty on all Installations

WWW.FOXWELLFLOORS.COM

1977 WEST STREET, ANNAPOLIS MD
410.224.7010 OR INFO@FOXWELLFLOORS.COM

Scott M. Smith D.D.S.

FAMILY DENTISTRY

410-626-9680



www.scottmsmithdds.com

104 Forbes Street, Suite 203
Annapolis, Maryland 21401

(Continued from page 2)

cal services. Once the message has been received at the 911 call center, a 911 specialist will respond. You should be prepared to answer questions and follow instructions.

- <https://www.aacounty.org/departments/police-department/text-to-911/index.html>

TEXT-TO-911 IS NOW AVAILABLE IN MARYLAND

If you're experiencing an emergency and are unable to place a voice call, you can send a text to 911. Follow these steps to request emergency services:

1. Enter 911 in the "To" line
2. Enter a brief message that includes the location of the emergency and type of service needed – police, fire, or ambulance
3. Hit send
4. Respond to questions from the responding 911 specialist and follow the instructions he or she provides

Tips for using text-to-911:

- If text-to-911 is not available in your area, or if it is temporarily unavailable, you should receive a message from your carrier letting you know to place a phone or relay call
- Pictures and/or videos cannot be received by 911 via text
- If you include another contact on your text it may not be received by 911
- English is the preferred language for text, however some limited translation services may be available
- Text in short, simple messages; Do not use abbreviations or slang
- **Do not text and drive**

911
CALL IF YOU CAN
TEXT IF YOU CAN'T

608 Ridge Drive is SOLD!

--And by the time you read this, SETTLED!



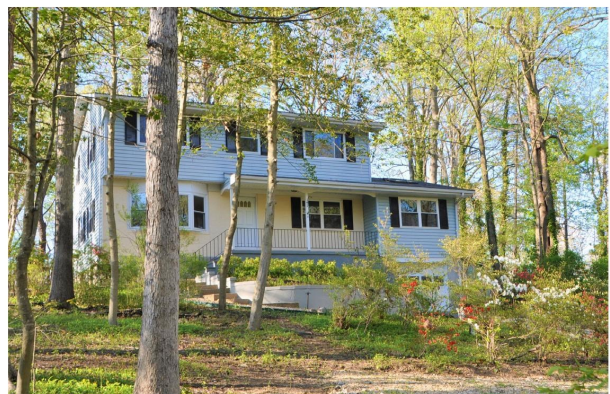
While George and Carolyn shall have taken the Saturday afternoon train to their new home in Bozeman, Montana, to be near son Patrick, his wife Christine, and of course, the grandchildren! This move also brings son Michael & family in Venice California far closer than now.

After 44 years in Hillsmere where the boys were born and grew up, George & Carolyn have packed everything down to the family silver and are off to a new & exciting adventure! No time for the usual farewell festivities, wish you all the very best...and, THANKS FOR THE MEMORIES!

Sold in Hillsmere in July

100 Maple Lane

Please welcome new homeowners
Samantha McGrath & Joel Hambalek



Nan Lodor

h +1 410 267 6204 | +1 410 353 7653 m
nan.lodor@sothebysrealty.com
Annapolis Brokerage
+1 410 280 5600

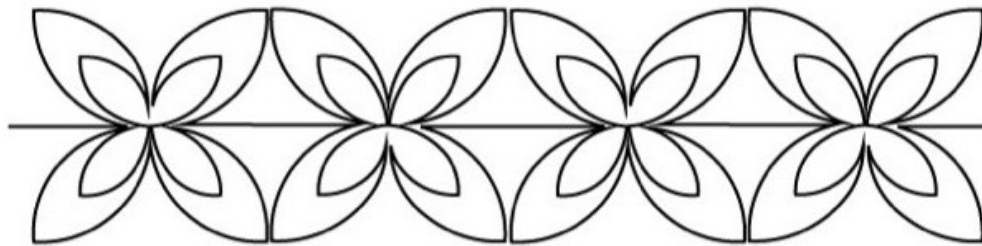
TTR | **Sotheby's**
INTERNATIONAL REALTY

Sotheby's International Realty® is a licensed trademark to Sotheby's International Realty Affiliates LLC. Each Office is Independently Owned And Operated. TTR Sotheby's International Realty fully supports the principles of the Fair Housing Act and the Equal Opportunity Act



"Your Chesapeake Connection"
Thomas & Elizabeth Eicher
Real Estate Professionals
Cell 410-212-3383/410-279-1702
Office 301-229-4000
yourchesapeakeconnection.com
*Free Home warranty or \$500 donated to a
 charity of your choice when you complete
 a transaction with us that ends in a sale.*




IN HOME STONE
MARBLE, GRANITE, & TILE

RESIDENTIAL • COMMERCIAL

**Ask us about
Stone
Restoration**

<p>In Home Stone Marble & Granite 1800 Virginia St. • Annapolis, MD 21401 • 410.626.2025 www.inhomestone.com Monday - Friday 8:30 - 5:00 • Saturday 9:00 - 2:00pm</p>	<p>In Home Stone Tile 100 Edgewood St. • Annapolis, MD 21401 • 410.626.2725 www.inhomestone.com Monday - Friday 8:00 - 5:00 • Saturday 9:00 - 2:00pm</p>
--	---

HSIA Building Permits

~ Dave Miles, HSIA VP & Permit Committee Chair



Are you aware that an HSIA Building Permit is required every time an Anne Arundel County Building Permit is issued for any work done at your property? The responsibility of obtaining an HSIA Building Permit falls on the owner, not the contractor.

Why does HSIA require and issue building permits? Per [HSIA Covenants & Deed Restrictions](#), HSIA's sideline setbacks (15') are different from the County (7'). *We encourage anyone having work done at their property to reach out to the HSIA Building Permit Chair, Dave Miles, before designing your structure or applying to the County.* Failure to obtain a HSIA Building Permit prior to the start of construction will result in a stop work order and, at a minimum, an increase in the cost of the permit.

The fee for an HSIA Building Permit is \$25. The fee increases to \$50 if work has already begun and you failed to apply for an HSIA Building Permit. **The following items are required to obtain a HSIA Building Permit:**

1. A copy of the Anne Arundel County Building Permit.*
2. A TO SCALE copy of the site plan.*
3. A copy of the plans and elevations, TO SCALE, of the structure. *
4. Cash or check in the amount of \$25., made payable to HSIA
5. Mail all required items & payment to HSIA, PO BOX 3485, Annapolis MD 21403

**AN EMAILED PDF OF THE COUNTY PERMIT AND THE TO-SCALE SITE and/or STRUCTURE PLAN IS PREFERRED AND MAY EXPEDITE THE PROCESS OF OBTAINING A HSIA BUILDING PERMIT.*

[HSIA Covenants & Deed Restrictions](#), recorded among the Land Record of Anne Arundel County, Maryland in Liber 900, Folio 334, are binding as a matter of law and are for the benefit of all other lot owners in Hillsmere.

[Anne Arundel County Code, 2005, Article 18, Zoning, Title 2, General Provisions, Subtitle 3, Set-backs](#)

For permit approval, please allow 10 working days to receive your permit in order to allow time to make sure all of your documents are legible (do not take photos of documents and email them), review it, verify your request meets HSIA Covenants and setbacks, and contact you for

(Continued on page 14)

Edinberg Carpentry

Home remodeling
Design/build
Custom cabinetry

Dave Edinberg
410.703.4068
edinberg.carpentry@gmail.com
MHIC 104481

KATHRYN M. WEBER CPA AND ASSOCIATES

KATHRYN M. WEBER, CPA
WEBER@KWEBERCPA.COM

100 SEVERN AVENUE, SUITE 102
ANNAPOLIS, MD 21403

410-280-8988

*Hillsmere
resident
😊*



Native Plant Sale

Native plants are perfectly adapted to our climate and soil types. They have co-evolved with wildlife and support native species of birds and insects. Native trees and shrubs have deeper root systems than grass, and help absorb stormwater.

Choose large trees carefully

Plant trees the appropriate distance from your house. Consider their final size. Plant small trees or shrubs where space is limited.

Order Information

Send orders to **Native Plant Sale**

503 Tayman Dr. Annapolis, MD. 21403

Checks payable to **HSIA**. Orders must be recieved by September 27th for fall delivery. Hillsmere residents only.

Questions?

Phyllis Saroff

410-268-1691

Name

Address

Email

Phone

Total Due

SPECIES

WILDLIFE VALUE

LOCATION

ORDERING

Plant descriptions referenced from Wikipedia and MOBOT

Plant descriptions referenced from Wikipedia and MOBOT																			
Light: (F)ull Sun (P)artial Shade (S)hade	Moisture: (D)ry (M)oist (W)et	Mature Size: Height/Spread	Songbird	Waterfowl	Hummingbird	Butterfly	Beneficial Insect	Small Mammal	Under Utility Line	Near Building	Sun	Shade	Dry	Wet	Container Size	Height	Unit Cost	Quantity	Total Cost
Canopy Trees																			
Willow Oak (<i>Quercus phellos</i>) A medium-sized tree that can grow moderately fast (up to 2 feet a year) that is distinguished by its willow shaped leaves. It is a popular tree for horticultural planting due to its rapid growth, hardiness and ability to withstand both sun and shade. It a prolific producer of acorns, an important food tree for squirrels, birds, and other animals in the forest. Fall color is brown.	F/P	MW	80-100'	x	x				x		x	x		x	3 gal.	4'	\$21	___	___
Bald Cypress (<i>Taxodium distichum</i>) Most Bald Cypress grow on flat ground on alluvial soils, mainly along riparian (riverside) wetlands normally subject to periodic flooding. It tolerates minor salinity, but does not grow in brackish waters. In cultivation it thrives on a range of soils including well-drained sites. It is a popular ornamental tree, grown for its feathery foliage and orange-brown fall color.	F/P	W	50-100' x 20-35'	x							x			x	5 gal.	4'	\$33	___	___
Small to Medium Trees																			
Eastern Redbud (<i>Cercis canadensis</i>) A popular landscape ornamental tree with clusters of magenta flowers appearing on bare stems in early spring. Eastern redbud is a frequent native understory tree in mixed forests, hedgerows and roadsides. Heart shaped leaves turn bright yellow in autumn.	P/S	D/M	20-35'	x		x		x	x			x			3 gal.	3'	\$28	___	___
River Birch (<i>Betula nigra</i>) Often with multiple trunks, the distinctive bark is variable, usually gray to pinkish-brown and scaly, exfoliating in curly papery sheets, making it a favored ornamental tree for landscape use. While its native habitat is wet ground, it will grow on higher land. Yellowish fall color.	F/P	MW	20-35'	x						x				x	3 gal.	8'	\$21	___	___
American Holly* (<i>Ilex opaca</i>) A slow growing ornamental plant, it will grow in both dry and swampy soil. The species typically grows as an understory tree in forests. Songbirds including thrushes, mockingbirds, catbirds, bluebirds and thrashers frequently feed on the red berries. The tree also forms a thick canopy which offers protection for birds from predators and storms.	F/S	M	15-50' x 18-40'	x						x	x	x	x		3 gal.	3'	\$52	___	___
Sweetbay Magnolia (<i>Magnolia virginiana</i>) An attractive multi-stemmed tree often used in horticultural applications to give structure to landscape designs. It is known for its large, white, vanilla scented flowers, for its clean, attractive foliage, and for its fast growth.		MW	20'	x			x	x	x		x			x	5 gal.	5'	\$33	___	___
Medium Shrubs																			
Summersweet (<i>Clethra alnifolia</i>) Typically used as a shrub for natural gardens, or placed alongside a stream or pond in order to delay erosion. It grows in wet forests, pine flatwoods, wetlands, bogs and can be seen alongside woodland streams. The flowers are white or very pale pink with a sweet fragrance from July until September. Foliage turns yellow-golden during the autumn.	F/S	MW	6-8'	x	x	x	x	x	x	x	x			x	3 gal.	18"	\$23	___	___
Winterberry (<i>Ilex verticillata</i>) A deciduous holly which is prized for the midwinter splash of bright red color from densely packed berries, which are highly visible on bare stems. Although wet acidic soils are optimal, the winterberry will grow well in the average garden. At least one male plant must be planted in proximity to one or more females for them to bear fruit. The berries are an important food resource for numerous species of birds. One male plant will be included with order.	F/P	M	8'	x	x				x	x	x	x			3 gal.	2'	\$20	___	___
Northern Bayberry* (<i>Myrica pennsylvanica</i>) A small tree or large shrub and is adaptable to many habitats. It grows naturally in wetlands, near flowing bodies of water, sand dunes, fields, hillsides, pine barrens, and in both needleleaf and mixed-broadleaf forests. The fruit is a source of food for a lot of bird species. In winter, the seeds are important foods for the Carolina Wren and species of Tree Sparrow.		D/W	6-12'	x					x		x			x	5 gal.	2'	\$25	___	___
Southern Arrowwood (<i>Viburnum dentatum</i>) Easily grown in average, medium, well-drained soil in full sun to part shade. White flowers appear in late spring give way to blue-black, berry-like drupes which are quite attractive to birds and wildlife. Variable fall color ranges from yellow to attractive shades of orange and red. Winter hardy, vigorous and reliable. Shrub borders. Tall hedge or screen.		D/W	10'	x				x	x			x			3 gal.	2'	\$20	___	___
Small Shrubs																			
Virginia Sweetspire (<i>Itea virginica</i>) Easily grown in average, medium to wet, well-drained soil in full sun to part shade. Adaptable to shade. Prefers moist, humusy soils, but tolerates a wide range of soil conditions. Versatile shrub for sunny or shady areas of the shrub border or woodland garden. Leaves turn an attractive red in autumn.	F/S	MW	3-6'	x	x		x	x	x	x	x	x			3 gal.	18"	\$21	___	___

* Indicates Evergreen

Plant order form created by:

Welspryng LLC
LANDSCAPE & STORMWATER
www.welspryng.llc



SOLD for \$710,000!

HOT MARKET!
 The market is HOT right now with low interest rates and low inventory!
 Please contact me if you or anyone you know is considering a move so that we can discuss how to take advantage of this market and keep you safe during the transaction.
 I appreciate your referrals!
 ~Rachel Frentsos





161 E. Bay View Drive

OVER 18 YEARS EXPERIENCE
 IN THE ANNAPOLIS MARKET

WWW.RACHELSHOMES.COM

EMAIL: RACHEL@LNF.COM
 FACEBOOK: [RACHELFRENTSOSHOMES](https://www.facebook.com/RACHELFRENTSOSHOMES)



ANNAPOLIS FINE HOMES

ANNAPOLIS FINE HOMES
 OF LONG & FOSTER REALTORS
 145 MAIN STREET
 ANNAPOLIS, MD 21401
 OFFICE: 410-263-3400
 MOBILE: 410-271-6246




LOCAL EXPERIENCE YOU CAN TRUST

We are a family owned and locally operated independent insurance agency serving the Annapolis and surrounding area for over 50 years.

HOME • AUTO • COMMERCIAL • LIFE



JACK MARTIN
 INSURANCE ADVISORS

111 FORBES ST. 410.263.8000 WWW.ASKJACK.CC

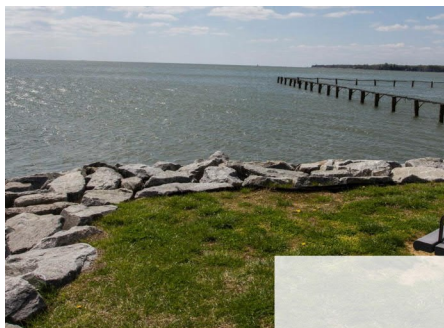
(Continued from page 10)

any questions on the submission. Your permit will also be mailed, via USPS, which takes several days.

If you have any questions on the setbacks, please see paragraph 2 on the previous page, or, feel free to ask before you go to the trouble of getting a County permit and find you cannot get an HSIA permit. When in doubt, or, if you have any questions, please contact Dave Miles, HSIA Building Permit Chairman via email, permits@hillsmereshores.org, or voice mail, 410-263-4456.

At the time of publication, the following [HSIA Building Permits](#) have been approved and issued in 2020:

Property Owner	Property Location	Type of Work	Permit #
Bay Built Homes	280 Cedar Lane	Fence	20001
D. Powell	108 Spruce Lane	Detached Garage	20002
K. Willingham	530 Harbor Drive	Deck	20003
D. Bicer	149 East Bay View Drive	Addition	20004
K. Coombe	126 Pinecrest Drive	Deck	20005
D. Cole	628 Riverside Drive	Fence	20006
J. Gould	137 Lee Drive	Shed	20007
J. Ludlam	136 Lee Drive	Front Portico	20008
A. Colman	138 Pinecrest Drive	Attached two-story garage	20009
J. DeOliveira	133A Lee Drive	Fence	20010
J. Cochran	108 Carroll Drive	Front Porch	20011



LOCAL EXPERTISE. GLOBAL REACH.

YOUR REAL ESTATE PROFESSIONAL & NEIGHBOR

Vanessa Knight of Engel & Völkers Annapolis is passionate about real estate and dedicated to providing unmatched customer service to each one of her clients. She knows the area, the local market and how to navigate it. With a global company behind her, she has a network of buyers at her fingertips. Let Vanessa help you find your way, home.



Annapolis Resident. Hillsmere Neighbor. Call Vanessa today!
443-808-6450 • vanessa.knight@evrealestate.com

ENGEL & VÖLKERS®
VANESSA KNIGHT

Garden Club

~ Leigh Gruber, Administrative Assistant



This summer there have been more Garden Club activities than in a normal summer. The end of the summer brought a second “Stroll-About,” and the club’s 4th Annual Tea.

The stroll-about featured the rain gardens in Ray Sullivan and Vijay Ramraj’s lovely yard. Catherine Stirling showed us her garden beds featuring groups of flowers that attract various pollinators (butterflies, hummingbirds, etc.). Several members chose to bicycle vs. stroll through the event, and participants enjoyed handcrafting yard decorations of driftwood, stone, shell, and bead, while at the home of Leigh Gruber.

Gardeners normally appreciate rain, however, it is less than ideal for an outdoor tea. About 20 members enjoyed a BYO tea in Kat Wimbish’s well shaded, back yard on a “no-rain” date.

The September meeting will be held at a pavilion in Quiet Waters Park. Members will bring an arrangement representing “What I did on my ‘Staycation’”. Member Jay Resnick, and his colleague, Katrina Golladay, will make a presentation on rain gardens.

Those with an interest in gardening related subjects are invited to the club, which meets September through May, on the third Wednesday of each month. Visitors are always welcome. For those wishing to join (Hillsmere residency is not required), annual dues for September through May are \$20. To receive the monthly “Buzz” newsletter or for more information about joining, send an email to the administrative assistant (asg.bulk@comcast.net).



Vijay and husband, Ray, talked about their numerous gardens, but their rain garden (not shown) in particular!



Catherine Stirling and Club president Jean Strucko pose in front of a small portion of Catherine’s garden beds.



Whimsical creations waiting to be picked up!



Piers & Harbors News

~ Steve Vanderbosch, HSIA Board Member and P&H Chair



RECORD-SETTING HURRICANE SEASON!

In the first week of August Tropical Storm Isaias swiped the Chesapeake Bay, with a track that passed over Easton, MD, and spawned several tornadoes on the Eastern Shore. If it had tracked a few miles farther West, we could have seen a different and more damaging outcome. Thanks to everyone who heeded the Tropical Storm warnings and either hauled their boats, or took precautions by doubling up lines, rigging fenders and removing canvas. Unfortunately, not everyone took such precautions; fortunately, we dodged a bullet with Isaias. But tropical storms and hurricanes threaten the Atlantic coast and the Chesapeake Bay every year. Do you have a *Hurricane Plan*?

So let's repeat what should be obvious: the HSIA Marina is not well-protected and is extremely vulnerable to wind, storm surge and wave action. The slips are narrow, and the pilings are short. If a Tropical Storm or Hurricane Warning is issued for this area (generally 36 hours in advance), the best thing to do is to remove your boat from the Marina, by having it trailered, hauled, or moved to safer moorings or hurricane holes.

If you are out of town or otherwise unavailable during hurricane season, it is *critical* that you have someone local designated to take care of your boat. Please *make sure their contact information has been provided to the Chair of Piers & Harbors!* (marina@hillsmereshores.org). Pay close attention to tropical storm forecasts, be proactive, and be ready to move your boat to safety.

Kayaks, paddleboards and canoes are vulnerable, too, and should be tied down and secured, or removed to your yard or garage, or another safer place.

If you decide to have your boat ride out a storm at the Marina (*NOT RECOMMENDED!*), take appropriate steps to secure your boat and protect the Marina by rigging extra lines, doubling up mooring lines and placing protective fenders. Boat owners are solely and completely responsible for securing their boats if left in the Marina during a tropical storm or hurricane. Note that all power and water will be shut off at the Marina and boat ramps during tropical storms and hurricanes.

(Continued on page 17)



**Everything You Need
in a Hardware Store & MORE!**

Brand Names at Competitive Prices

Organic Lawn & Garden Care

Water Conditioning Salts • Weber Grills • Swimming Pool Chemicals
Bug Control • Green Cleaning Supplies • Marine Paint & More
Crabbing Equipment & Spices

Friendly, Expert Advice

912 FOREST DRIVE • ANNAPOLIS, MD 21403

www.kbtruevalue.com • 410-268-3939



CHRISTIE'S
INTERNATIONAL REAL ESTATE

Cell: 410-703-4687 • Office: 410-224-0600

Danielle.Franz@LongandFoster.com



Danielle-Franz.com

Long & Foster Real Estate, Inc.

711 Bestgate Road, Annapolis, MD 21401



Danielle Franz
REALTOR®



SLIP HOLDERS ARE RESPONSIBLE FOR AND ASSUME FULL AND SOLE RISK OF DAMAGE TO THEIR BOATS AND THEIR EQUIPMENT, THE BOATS AND EQUIPMENT OF OTHERS, AND THE HSIA PIERS AND DOCKS AS A RESULT OF LEAVING THEIR BOATS IN THE MARINA DURING A TROPICAL STORM OR HURRICANE.

Financial Report

P&H ended Fiscal Year 2020 in the black again, for the fifth consecutive year, with an unaudited cash balance of \$375,967 compared to the beginning of the year cash balance of \$298,385. At this point, the P&H Committee anticipates recommending to the HSIA Board that P&H Fees (slips, ramp keys, kayak racks) for FY2022 remain unchanged. The draft P&H budget for FY2022, including fee recommendations, will be developed following the receipt of a Reserve Study that is now underway.

Reserve Study

The HSIA Board has approved a contract for a Reserve Study of P&H assets, to be conducted by Superior Reserve, LLC, in September, 2020. A Reserve Study is a physical and financial analysis typically done for HOAs and condos, and involves an onsite inspection of infrastructure and assets by qualified engineers, followed by analysis and the development of a report, including a 30-year expenditure forecast. This will assist the Piers & Harbor Committee and HSIA in developing budgets, setting fees, and accumulating necessary reserves for future repair and replacement projects.

Major Maintenance and Capital Projects

The P&H Committee will be considering and hopefully accomplishing some major maintenance and capital projects in the coming year. Among the projects being considered are: shoreline preservation and improvements at the Sand Spit (more on that below); upgrading the security camera system; upgrading the electrical system with code-compliant shore power pedestals; reconstructing the Kayak Ramp dock; and replacing/relocating the gates at the Marina and the Beach Drive Boat Ramp. Consideration may also be given to the installation of additional boat lifts.

Marina Slips and Occupancy

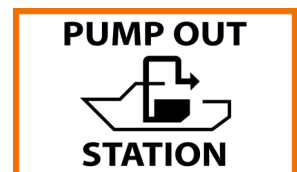
The Marina remains essentially full, with only 4 unassigned large slips (#52, #56, #A7, #A9) out of 123 total slips. Some turnover continues as residents move or give up their slips and new or current residents seek slip assignments.

Marina Operations

Routine maintenance has continued as needed. If you see something that needs attention, please contact marina@hillsmereshores.org, or the guy who does most of the work: Norm Johansen at normjohansen@gmail.com.

New Pump Out Now Pumping Out!

The replacement Pump Out unit has been installed and was operational as of August 8th. As before, the controls are inside the dock box with a new pump out hose, unlocked by the “MARINA” key. Operation is controlled by two push buttons, rather than a toggle switch. Installation was a combined effort of Leight Electric, Gene’s Plumbing, Norm Johansen and Steve Vanderbosch.



(Continued on page 18)

Shore Power Outlet Upgrade

The HSIA Board has approved a contract with Leight Electric to upgrade 32 shore power outlets at the Marina. This will involve replacing the old plugs along the bulkhead and the main dock with code-compliant Eaton Newport Harbor Mate shore power outlet boxes, including 30 amp shore power receptacles, circuit breakers, 20 amp GFI receptacles, and amber lights, matching those on the reconstructed portion of the main pier. Work is expected to start late September, during which there will be temporary power interruptions in the work areas.

Riprap and Jetty at Marina Sand Spit

As reported in the last Sea Breeze, starting on July 8th, Pay Dirt LLC contractor began repairing and replenishing the jetty and riprap at the Marina. As a short-term measure, the riprap is being repaired and replenished to protect the sea wall and Sand Spit that sits behind it. Five truck-loads of new stone were emplaced to return the riprap to the level of the sea wall and improve its gradient where necessary, so it can hopefully absorb and reflect more wave energy.

Hillsmere Marina Green Riprap

On Monday August 17th a group of 3 US Fish and Wildlife Service employees and 5 HSIA volunteers (all wearing facemasks and social distancing) started a Green Riprap project at the Marina, funded by a Unity Gardens grant. Green Riprap is a small-scale, low-cost restoration technique for improving existing riprap shorelines, and involves planting riprap with tidal marsh plants. This project is a planting at the Marina jetty, with technical assistance from the US Fish and Wildlife Service, using an innovative new technique for softening rip-rap structures. Tidal marsh grasses, grown in coconut fiber pots, were planted in the jetty riprap, by wedging them in the voids of the riprap. The coconut fiber pots hold soil in for the plants. This project will ultimately create habitat for tidal marsh species, beautify the riprap structure, and engage Hillsmere residents in restoration work. PLEASE DO NOT DISTURB THE PLANTINGS IN THE RIPRAP!

Living Shoreline at the Marina

In close cooperation with the HSIA Shoreline Conservation Committee, the Piers & Harbor Committee is exploring the possibility of creating a living shoreline along the Sand Spit at the Marina. This would basically involve the construction of several segmented, low-level, stone breakwaters about 20-40 feet off the Sand Spit bulkhead/riprap facing the South River. The area between the bulkhead and the breakwaters would be in-filled with sand and planted with native grasses, creating a tidal marsh/habitat area. This has become a popular and effective method of shoreline conservation. Look across Duvall Creek and you can see a living shoreline being constructed at the Fishing Creek peninsula. This could be the best long term solution for diminishing the wave energy pounding the Sand Spit bulkhead and riprap.

HSIA's application through the Arundel Rivers Federation for a DNR design grant, though highly rated, was not selected for funding this year. Other sources of design funding are currently being explored/applied for, with the hope that a grant, along with a modest HSIA matching fund of about \$7,000, can produce a Living Shoreline design to be presented to the Community.

Duvall Creek Entrance Channel Markers

Although HSIA has in hand the necessary permits for replacing the Duvall Creek entrance chan-

(Continued from page 18)

nel markers, we have not yet succeeded in finding a marine contractor to perform the work, which is a relatively small project during a busy marine construction season. Efforts to secure a contractor will be renewed this fall.

Boat Park

There is a temporary stop to adding new tenants to the Boat Park as the shoreline conservation and Vegetation Management Plans are implemented along the shoreline area at the rear of the Boat Park. *Please do not park trailers at the rear of the Boat Park until further notice.* As that work progresses we anticipate additional spaces will become available. If interested, you may get on the Boat Park Wait List. There will be some relocation of trailers occurring as we try to maintain the scheme of large, two-axle trailers on the left (South) side, single-axle trailers on the right (North) side, angled parking for all, and everyone parked close together.

P&H Meetings

There will be no P&H Meetings until further notice. Please direct questions/issues/concerns/comments to marina@hillsmereshores.org.

A local expert is always

Your best REAL ESTATE resource.



Dawn Dougan "does it again"

REALTOR® Local Grown

410-991-9500

Cell: 410-991-9500

Office: 410-224-0600

Dawn.Dougan@LNF.com

AtHomeAnnapolisRealEstate.com

Long & Foster Real Estate, Inc.
711 Bestgate Road • Annapolis, MD 21401

Integrity In Real Estate since 1986

CERTIFIED MILITARY RELOCATION PROFESSIONAL



Thanking military families for their service by helping them come home.



**The National Association of Realtors recognizes
SUSAN REINHART
as a Certified Military Relocation Professional.**

Being a Certified Military Relocation Professional allows
The Reinhart Group access to Member-Only resources.

Brian and Susan are
proud to call
Hillsmere home!



410-456-1943



www.TRGSellsMaryland.com



TRGSellsMaryland@gmail.com



RESIDENTIAL BROKERAGE
4 CHURCH CIRCLE
ANNAPOLIS, MD 21401
410-263-8686



Thank you for your interest in advertising with the *Sea Breeze*!



Current ad pricing:

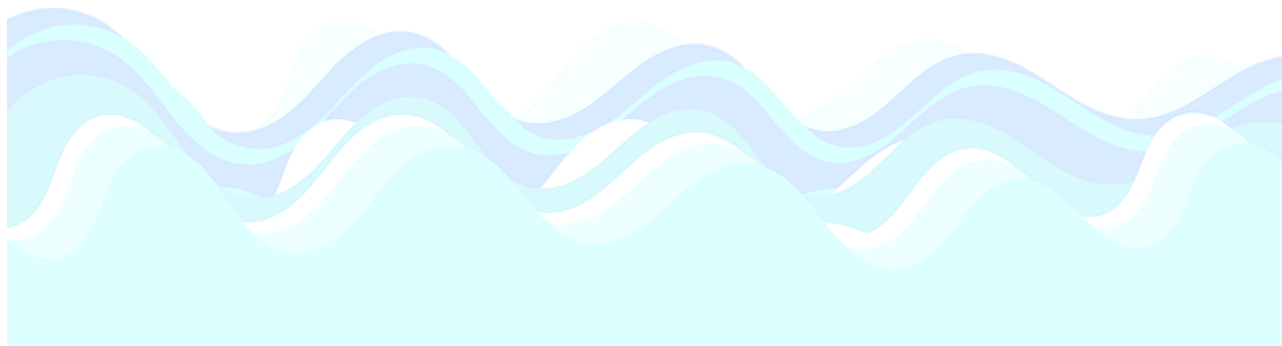
- Business Card (2x3.5) \$25/issue
- 1/4 page (4.5x3.5) \$70/issue
- 4x4 page \$80/issue
- 1/3 page (3 x 7) \$85/issue
- 1/2 page (4.5x7) \$115/issue
- Full page \$230/issue
- Full page flyer/insert \$100/issue (you provide copies of the flyer to our printer and we charge \$100 to insert it in the newsletter)

There are 10 issues each year, with the months of January/February and July/August combined into a single issue. We produce a hard copy that is emailed to 500+ households in the neighborhood, emailed directly to 700+ individuals, and post each edition on our community website (www.hillsmereshores.org).

Please submit a print-ready, electronic rendering of your business card or ad, using either a jpg, png or pdf file. Please specify the size of ad you are placing, and how many months you would like the ad to run. Please note, we cannot re-size, format, alter, add, or delete any information to/from your ad. Your ad file must be sized, formatted and ready to insert for use in order to be accepted for publication. You will be billed monthly, after the ad runs.

The deadline for all advertising submissions is the 3rd Wednesday of each month.

Regards,
Kelly Ann Pavkov
Editor, *the Sea Breeze*
seabreeze@hillsmereshores.org



Babysitter/Mother's Helper

Ady	Age 16	410-980-5210
Bella	Age 15	443-534-7918
Caitlyn	Age 18	443-875-9043
Ella	Age 14	443-223-0572
Ella	Age 13	410-533-8442
Emily	Age 14	410-570-9127
Grace	Age 17	410-353-4983
Katie	Age 16	410-268-2686
Keira	Age 19	410-507-9143
Lauren	Age 16	443-750-1228
Maggie	Age 14	443-900-5511
Maia	Age 16	443-221-9610
Mia	Age 16	410-507-3628
Sara	Age 16	443-569-1722
Sarah	Age 18	443-699-2165
Shanley	Age 13	443-569-9764
Taylor	Age 15	410-991-7498
Tessa	Age 13	443-905-6017
Linda	Adult	443-822-7956

Pet Sitter/Dog Walker

Linda	Adult	443-822-7956
Shondra	Adult	240-578-9221
Earl	Adult	410-570-1894
Mary Ellen	Adult	410-212-5744
Hannah	Adult	410-980-6189
Cheryl	Adult	410-353-2066
Elaine	Adult	443-822-6035
Maggie	Age 14	443-900-5511
Elias	Age 13	443-462-7270
Shanley	Age 13	443-569-9764
Emily	Age 14	410-570-9127
Sean	Age 14	443-569-9811
Mia	Age 16	410-507-3628
Lauren	Age 16	443-750-1228
Kate	Age 17	443-995-7133
Katie	Age 16	410-268-2686
Eliza	Age 16	443-822-4995
Keira	Age 19	410-507-9143

the SEA BREEZE

Published by: the Hillsmere Shores Improvement Association (HSIA)

P.O. Box 3485, Annapolis, MD 21403

www.hillsmreshores.org

Editor: Kelly Ann Pavkov [seabreeze@hillsmreshores.org]

Administrator: Jean Somers [admin@hillsmreshores.org]

Treasurer's Assistant: Jim Schwallenberg

HSIA Service and Information: 410-263-4456 (24-hour voicemail)

HSIA OFFICERS 2019-2020

President	Mike Waters	410-263-4456
Vice President	Dave Miles	410-263-4456
Secretary	Mike Wurst	410-263-4456
Treasurer	Gene Gross	410-263-4456

BOARD of DIRECTORS 2020-2021

Claire Corcoran	410-263-4456
Chris Grim	410-263-4456
Jay Harper	443-263-4456
Phil Jones	410-263-4456
Ray Sullivan	410-263-4456
Steve Vanderbosch	410-263-4456

COMMITTEE CHAIRPERSONS

Beach	Sharon Blugis	410-263-4456
Building Permits	Dave Miles	410-263-4456
Budget	Gene Gross	410-263-4456
Bylaws	Mike Wurst	410-263-4456
Communication	K. Pavkov & M. Wurst	410-263-4456
Community House	Tom Schwallenberg	410-263-4456
Entertainment	Nuala O'Leary	410-263-4456
Environmental	Kevin Green	410-263-4456
Historian	Julie Crudele	410-263-4456
Membership	Jean Somers	410-263-4456
Nominations	Mike Wurst	410-263-4456
Piers & Harbors	Steve Vanderbosch	410-263-4456
Pool	Danielle Franz	410-263-4456
Security	Claire Corcoran	410-263-4456
Shoreline Protection	Kevin Green	410-263-4456
Traffic	Matt Franz	410-263-4456
Web Master	Kelly Ann Pavkov	410-263-4456
Welcoming	Kathy McFadden	410-330-8432
Zoning & Covenants	Claire Corcoran	410-263-4456
Key School Liaison	Irfan Latimer	443-321-7811
ANPF Representative	Ray Sullivan	410-263-4456

COMMUNITY FACILITIES and LOCAL CONTACT INFORMATION

Beach Picnic Area Reservations	410-263-4456
Boat Ramp Keys & Boat Slip Assignments	410-263-4456
Guest Parking Passes	410-263-4456
Hillsmere Car & Boat Trailer Stickers	410-263-4456
Hillsmere Garden Club	410-268-7175
Hillsmere Swim Team	443-336-8432
County Community Services Specialist	410-222-1242
Animal Control	410-222-8900
Recycling Information & Bulk Trash Pick Up	410-222-6100

2020 BOARD MEETINGS - 7:00 p.m.

Jan 30	April 30	July 30	Oct 29
Feb 27*	May 28	Aug 27	Nov 19
Mar 26	June 25	Sep 24	Dec 17

2020 GENERAL MEETINGS - 7:00 p.m.

January 9	May 14	September 10
March 12	July 9	November 12

All Board & General meetings are held in the Barn Commons @ Key School, unless otherwise noted. *Science & Library Center @ Key School, room 102

SEPTEMBER 2020

Sunday	Monday	Tuesday	Wednesday	Thursday	Friday	Saturday
		1	2	3	4	5
6 Beach & Shoreline Committees Meeting @ 6p	7 <i>Labor Day</i>	8	9	10	11	12 Nominations Due! (see page 4)
13	14	15	16	17	18 <i>Rosh Hashanah</i>	19 <i>Rosh Hashanah</i>
20 <i>Rosh Hashanah</i>	21	22 <i>Autumnal Equinox</i>	23	24	25	26
27 Yom Kippur Begins	28	29	30			



Hillsmere Shores Improvement Association
P.O. Box 3485, Annapolis, MD 21403
www.hillsmereshores.org

**PRESORTED STANDARD
U.S. POSTAGE PAID
MILLERSVILLE, MD
PERMIT NUMBER 141**