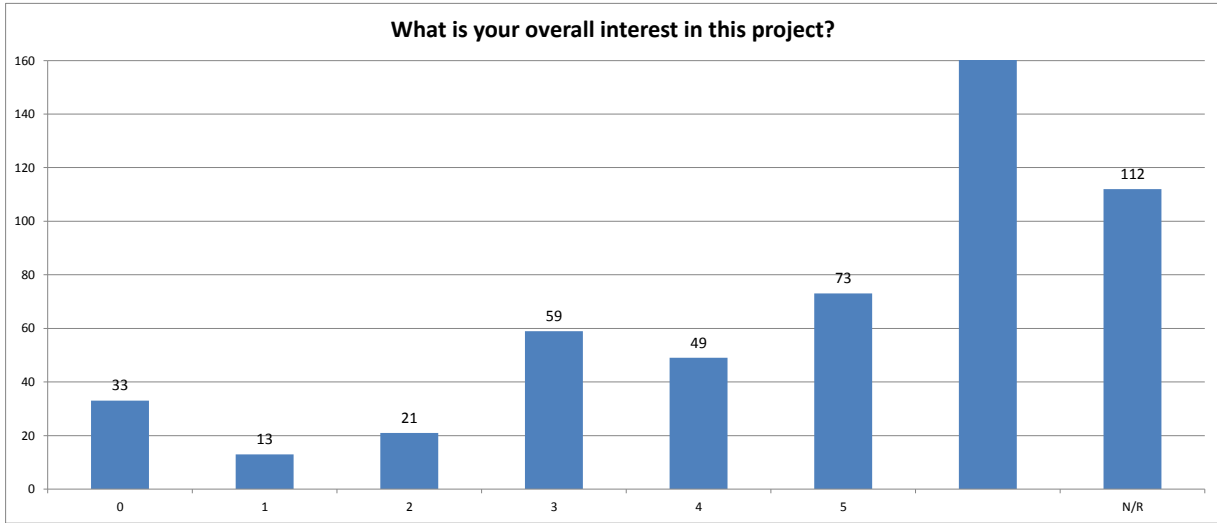
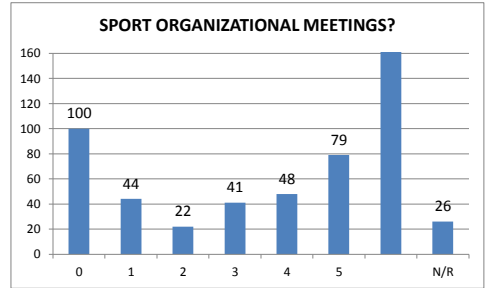
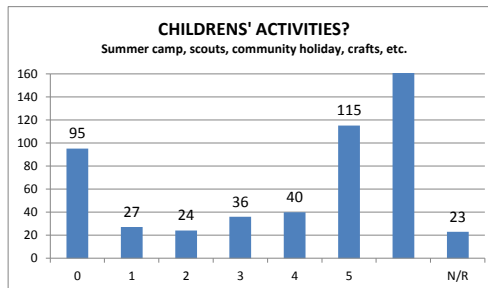
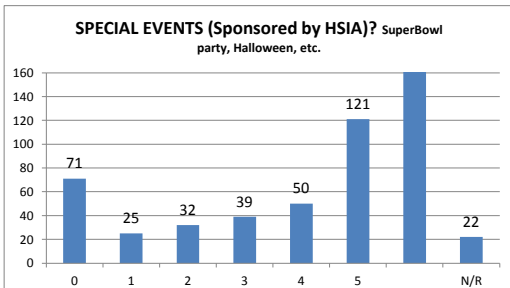
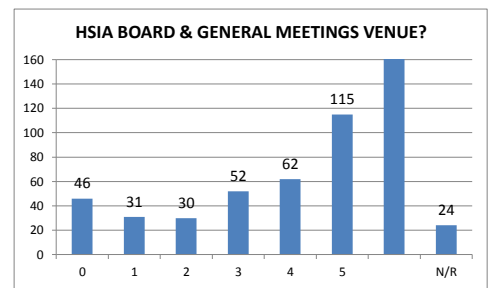
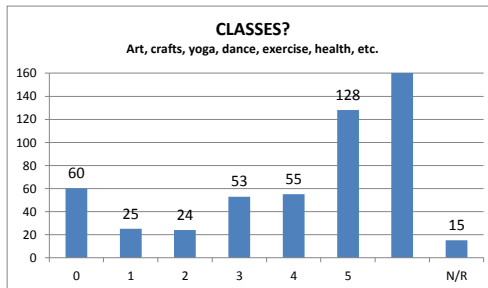
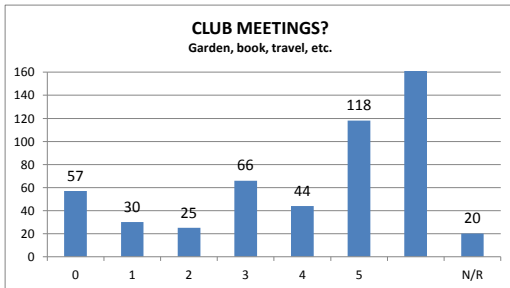
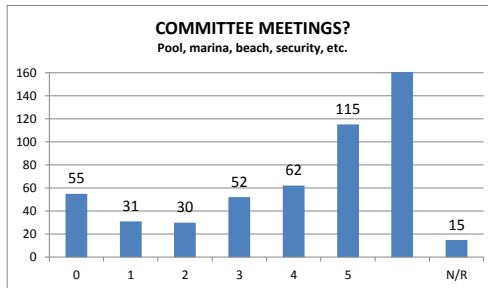


2016 HSIA Community Club House Survey #1 Results Survey Period May 5, 2016 - June 15, 2016

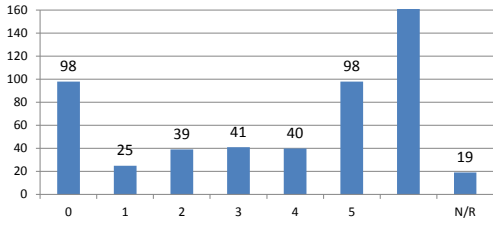
Total responses 360
 Online responses 176
 Postal Mail responses 184
 Duplicate responses 24



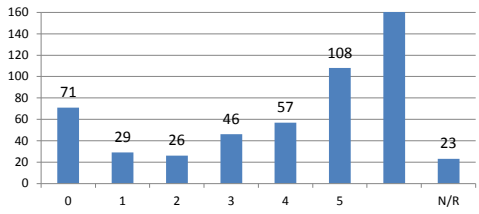
What type of activities would you be likely to support or use?



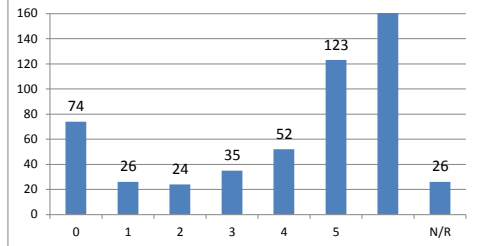
SENIOR CITIZEN ACTIVITIES?
Exercise, book club, travel clubs.



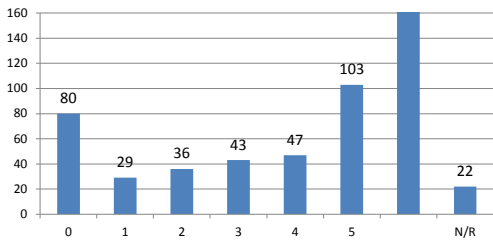
HEALTH & FITNESS ORGANIZATION & ACTIVITIES?



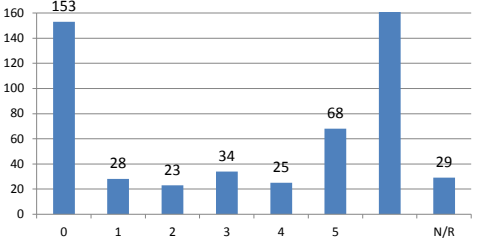
PRIVATE PARTIES FOR HILLSMERE RESIDENTS?



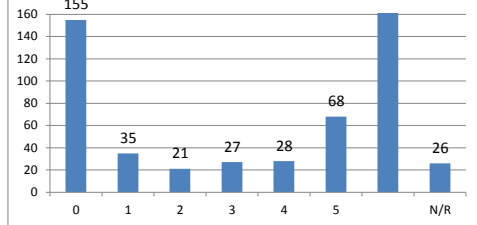
MONTHLY HAPPY HOUR IN WINTER MONTHS?



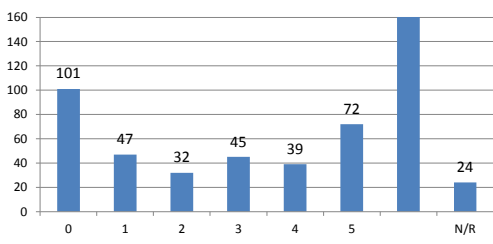
PRE-SCHOOL MOTHERS' GROUP?



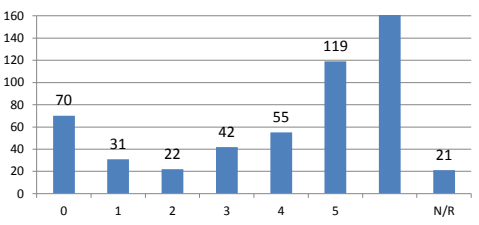
BEFORE & AFTER CARE FOR SCHOOL CHILDREN?



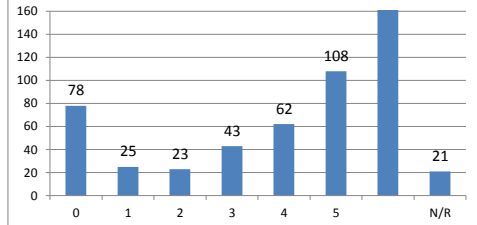
FAMILY DINNER NIGHTS?



USING THE CENTER DURING POWER & STORM EMERGENCIES?



PUBLIC SERVICE MEETINGS?
Polling Place, Blood drives, etc.



How Concerned Are You About the Following?

